




OSAPIENS CASE STUDY

# Responsibility at the Core

GOLDBECK's Blueprint for  
Supply Chain Transparency

## GOLDBECK

### Company:

-  Construction & Building Services
-  around 13,000 employees
-  Revenue in the financial year  
2023/24: 6.4 billion euros

### Products:

osapiens HUB for  
Supply Chain Compliance (LkSG)

### Results:



Reduction of  
manual effort



Centralized data  
management and  
rapid risk analyses



Future-proof  
compliance

Find out more about the cooperation  
between GOLDBECK and osapiens.



### About GOLDBECK

GOLDBECK develops future-oriented real estate in Europe, offering customers a complete range of services from a single source: from planning and construction to services during operation. The family-owned company delivers real estate solutions that are economical, fast, and sustainable with precisely tailored functionality.

The company's range of services includes warehouses and factories, multi-storey car parks, office and school buildings, sports halls, fire stations, and residential buildings. Refurbishment and expansion of existing buildings, as well as building-related services complete the GOLDBECK spectrum. GOLDBECK currently employs around 13,000 people at over 100 locations throughout Europe.

To comply with the German Supply Chain Due Diligence Act (LkSG), GOLDBECK relies on the digital platform solution osapiens HUB. This platform enables GOLDBECK to comprehensively digitize and automate its supply chain processes, centralize supplier data, monitor risks effectively, and streamline all steps toward supply chain transparency.

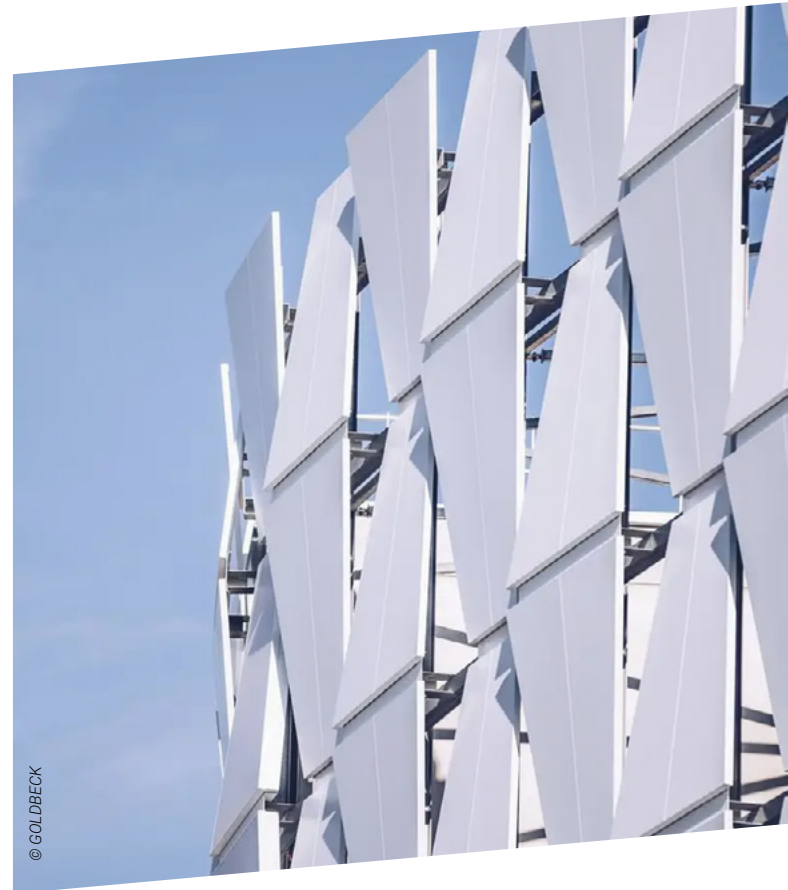
### Compliance in Construction Mode: Challenges of the Supply Chain Due Diligence Act (LkSG)

In 2022, GOLDBECK prepared its diverse and dynamic supplier network for the new LkSG requirements. The large number of suppliers, tight implementation timelines, decentralized purchasing, and the need to assess individual human rights and environmental risks for each direct business partner made an automated solution necessary.

In the construction industry, where numerous subcontractors are involved, consistent risk assessment and efficient downstream supply chain management are critical.

### Digital Foundation for the Future: osapiens HUB as Central Platform

To meet LkSG requirements, GOLDBECK chose the osapiens HUB as its digital solution. The goal was to promote transparency across the supply chain in order to create a



basis for continuous improvement. With the Due Diligence solution from osapiens, the company can efficiently and automatically check its direct suppliers. This significantly reduces the manual effort. Thanks to the intuitive user interface and standardized interfaces, the implementation was quick and smooth. The solution supports GOLDBECK's sustainability requirements in procurement by evaluating direct suppliers based on environmental and social practices and identifying potential sustainability risks.

### Efficiency at Your Fingertips: Automation for LkSG Compliance

The reasons for choosing the osapiens HUB were clear: GOLDBECK wanted a fast and comprehensive solution that would support the fulfillment of the LkSG requirements and enable the timely submission of the report. The software ensures that the legal requirements are reliably met. Its high level of user-friendliness makes it easy to use in different areas of the company.

## Sustainability at the Core of Corporate Strategy

GOLDBECK sees the LkSG requirements not just as a legal obligation, but also as an opportunity to identify, analyze and thus prevent sustainability risks within its own supply chain. With the osapiens solution, the company can strategically collect extensive supplier data and evaluate it for more supply chain diligence. Centralized data management and the ability to quickly analyze risks for each supplier enable GOLDBECK to promote transparency in the supply chain.

## Prepared for Tomorrow: The osapiens HUB as a Basis for Future ESG Requirements

With the osapiens HUB, GOLDBECK has created a solid foundation for meeting future regulatory requirements quickly and efficiently. By centrally managing data in the osapiens HUB, GOLDBECK can access existing data for further reports, and reduce the manual effort required for upcoming requirements. As a result, the company is well positioned not only for LkSG, but also for future regulations.

## You have questions?

Feel free to contact us for more information.

[Find out more](#)

## Why osapiens?

- ▶ **Efficient, Automated Compliance Solutions:**  
The osapiens HUB enables fully automated monitoring and risk assessment across the entire supply chain, significantly reducing manual effort and reliably ensuring compliance with legal requirements such as LkSG and other ESG regulations. This enables companies to meet compliance requirements efficiently and securely.
- ▶ **Partnership and Goal-Oriented Collaboration:**  
Working with osapiens is characterized by direct communication, quick response times, and a smooth transition from sales to project team. Our partnership approach, based on openness and shared goals, ensures that companies receive optimal support in implementing their compliance strategies.
- ▶ **Ease of Use and Focus on Sustainability:**  
The osapiens HUB offers an intuitive user interface and standardized interfaces for easy integration into existing systems. At the same time, the solution creates data-driven transparency and **helps** companies **achieve** their sustainability goals and creates sustainable value in the supply chain.







### osapiens – one platform for sustainable growth

osapiens develops cloud-based software solutions that empower companies to drive sustainable growth across their entire value chain. With powerful data integration and real-time analytics, osapiens supports companies to consolidate, interpret and act on complex operational data and sustainability metrics.

The osapiens HUB – a scalable, AI-powered platform – combines over 25 solutions to enhance operational efficiency and sustainability in two core areas: **Transparency solutions** enable companies to map and monitor their entire value chain to mitigate supply chain risks and comply with regulatory requirements such as EUDR, CSRD and CSDDD. **Efficiency solutions** facilitate operational excellence by streamlining maintenance processes, optimizing asset performance, and enabling efficient planning, scheduling, and field service operations.

Headquartered in Mannheim, Germany, osapiens works with an international team of over 500 employees to support more than 2,000 customers worldwide.



2000 + Customers  
60 + Countries  
500 + Employees  
60 + Nationalities

#### Contact us

Julius-Hatry-Straße 1  
68163 Mannheim

info@osapiens.com  
+49 (0) 621 15020690  
www.osapiens.com

Visit us on LinkedIn 